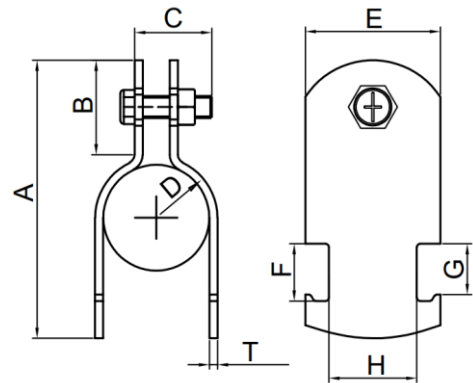
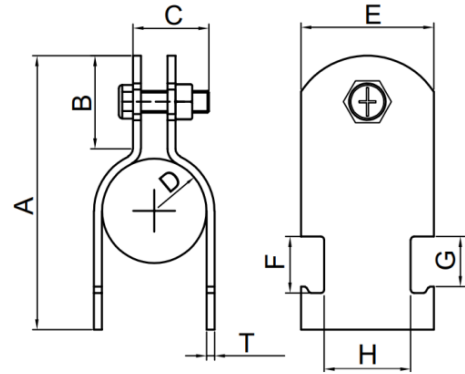


FEATURES

- **Size Range:** 1/2" to 8" pipe sizes
- **Material:** Carbon Steel
- **Finish:** Electroplated Galvanized
- **Function:** Fits into open side of strut channel.
- **Approval:** : 1/2" to 4" for UL.



Size : 1/2 " , 3/4 " , 1 " , 1-1/2 " , 2 " , 2-1/2 "



Size : 1-1/4 " , 3 " , 4 " , 5 " , 6 " , 8 "

SPECIFICATIONS

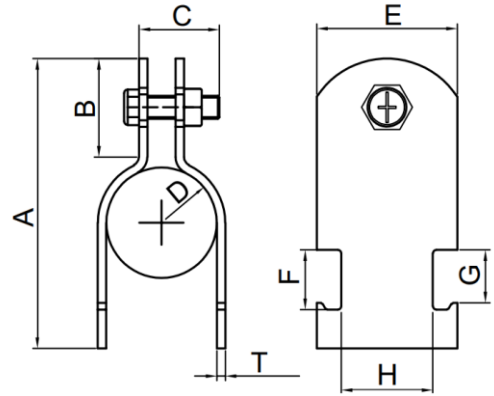
Material: Carbon Steel

Unit: Inch

FirmFX #	SIZE	A	B	C	D	E	F	G	H	T	Static load (lbs)	Certifications
FX40EG0050	1/2"	2.09"	0.71"	1.25"	0.84"	1.26"	0.53"	0.47"	0.83"	0.07"	450	UL
FX40EG0075	3/4"	2.36"	0.71"	1.25"	1.05"	1.26"	0.53"	0.47"	0.83"	0.07"	450	UL
FX40EG0100	1"	2.52"	0.71"	1.25"	1.31"	1.26"	0.53"	0.47"	0.83"	0.07"	450	UL
FX40EG0125	1-1/4"	3.07"	0.79"	1.25"	1.66"	1.26"	0.53"	0.47"	0.83"	0.07"	600	UL
FX40EG0150	1-1/2"	3.27"	0.87"	1.50"	1.90"	1.26"	0.53"	0.47"	0.83"	0.09"	600	UL
FX40EG0200	2"	3.86"	0.87"	1.50"	2.37"	1.26"	0.53"	0.47"	0.83"	0.09"	750	UL
FX40EG0250	2-1/2"	4.41"	0.87"	1.75"	2.87"	1.26"	0.53"	0.47"	0.83"	0.09"	850	UL
FX40EG0300	3"	5.43"	0.98"	1.75"	3.50"	1.26"	0.53"	0.47"	0.83"	0.09"	850	UL
FX40EG0400	4"	6.30"	1.06"	1.75"	4.50"	1.26"	0.53"	0.47"	0.83"	0.09"	850	UL
FX40EG0500	5"	7.44"	1.00"	1.50"	5.56"	1.26"	0.53"	0.47"	0.83"	0.13"	900	/
FX40EG0600	6"	8.50"	1.00"	1.50"	6.63"	1.26"	0.53"	0.47"	0.83"	0.13"	900	/
FX40EG0800	8"	10.52"	1.00"	1.50"	8.63"	1.26"	0.53"	0.47"	0.83"	0.13"	900	/

FEATURES

- **Size Range:** 1/2" to 4" copper tube sizes
- **Material:** Carbon Steel
- **Finish:** Copper Colored Epoxy
- **Function:** Fits into open side of strut channel.



SPECIFICATIONS

Material: Carbon Steel

Unit: Inch

FirmFX #	SIZE	A	B	C	D	E	F	G	H	T	Static load (lbs)
FX40CE0050	1/2"	1.95"	0.63"	1.00"	0.62"	1.26"	0.53"	0.47"	0.83"	0.06"	450
FX40CE0075	3/4"	2.20"	0.63"	1.00"	0.87"	1.26"	0.53"	0.47"	0.83"	0.06"	450
FX40CE0100	1"	2.60"	0.76"	1.00"	1.13"	1.26"	0.53"	0.47"	0.83"	0.07"	450
FX40CE0125	1-1/4"	2.85"	0.76"	1.00"	1.37"	1.26"	0.53"	0.47"	0.83"	0.07"	600
FX40CE0150	1-1/2"	3.11"	0.76"	1.00"	1.63"	1.26"	0.53"	0.47"	0.83"	0.07"	600
FX40CE0200	2"	3.78"	0.88"	1.25"	2.13"	1.26"	0.53"	0.47"	0.83"	0.10"	850
FX40CE0250	2-1/2"	4.15"	0.76"	1.25"	2.63"	1.26"	0.53"	0.47"	0.83"	0.11"	850
FX40CE0300	3"	4.72"	0.76"	1.25"	3.13"	1.26"	0.53"	0.47"	0.83"	0.11"	850
FX40CE0400	4"	5.71"	0.76"	1.50"	4.13"	1.26"	0.53"	0.47"	0.83"	0.12"	850