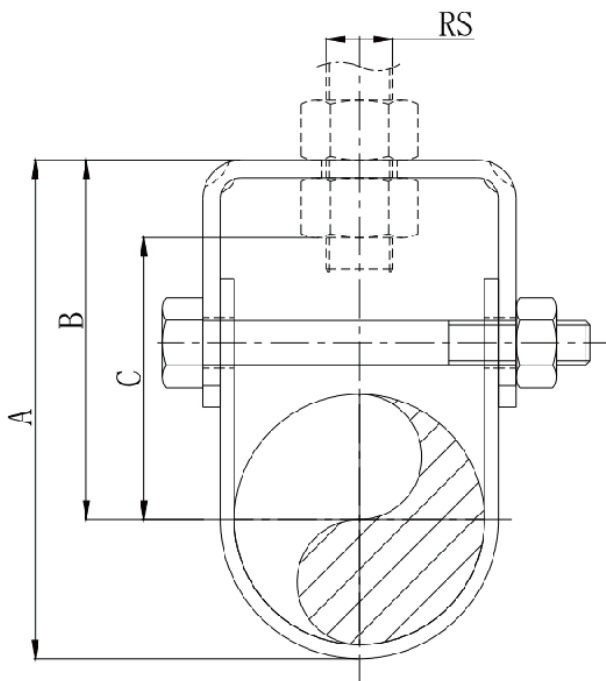
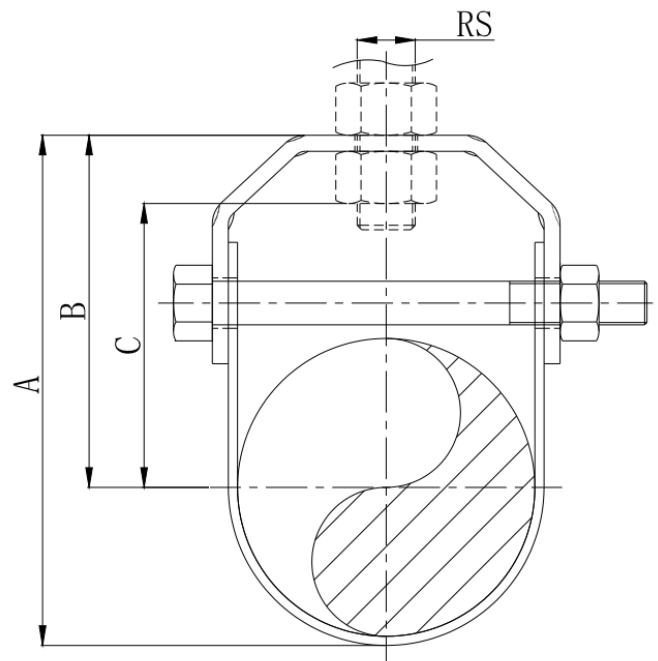


FEATURES

- **Size Range:** 1/2" through 24"
- **Material:** Carbon steel
- **Finish:** Plain, Electroplated Galvanized.
- **Function:**
 - Allows vertical adjustment of pipe after installation.
 - When using an oversize clevis, it is recommended to install a full width spacer on the cross bolt to prevent failure due to disfiguring the U-strap.
 - When using insulated pipe, order hanger sized to correspond to overall dimension. It is also recommended to use insulation shields.
- **Temperature:** Maximum temperature Plain 650°F, Galvanized 450°F.
- **Standard:** Conforms with Federal Specification WW-H-171 (Type 1)
Manufacturers Standardization Society (MSS) SP-69(Type 1)
- **Approval:** UL listed 1/2" through 8"
FM approved 3/4" through 6"



1/2" – 1-1/4"



1-1/2" – 24 "



Standard Clevis Hanger

SIZE

Material: Carbon Steel

Unit: Inch

FirmFX #	PIPE SIZE	A	B	C	RS	Static load (lbs)	Certification
FX19PS0050	1/2"	2.228"	1.697"	1.082"	3/8"	730	/
FX19EG0050	1/2"	2.228"	1.697"	1.082"	3/8"	730	UL
FX19PS0075	3/4"	2.425"	1.736"	1.358"	3/8"	730	/
FX19EG0075	3/4"	2.425"	1.736"	1.358"	3/8"	730	UL/FM
FX19PS0100	1"	2.783"	2.004"	1.574"	3/8"	730	/
FX19EG0100	1"	2.783"	2.004"	1.574"	3/8"	730	UL/FM
FX19PS0125	1-1/4"	3.856"	2.441"	2.011"	3/8"	730	/
FX19EG0125	1-1/4"	3.856"	2.441"	2.011"	3/8"	730	UL/FM
FX19PS0150	1-1/2"	3.902"	1.531"	0.976"	3/8"	730	/
FX19EG0150	1-1/2"	3.902"	1.531"	0.976"	3/8"	730	UL/FM
FX19PS0200	2"	4.492"	1.622"	1.047"	3/8"	730	/
FX19EG0200	2"	4.492"	1.622"	1.047"	3/8"	730	UL/FM
FX19PS0250	2-1/2"	5.161"	1.697"	0.921"	1/2"	1130	/
FX19EG0250	2-1/2"	5.161"	1.697"	0.921"	1/2"	1130	UL/FM
FX19PS0300	3"	5.988"	1.909"	1.138"	1/2"	1130	/
FX19EG0300	3"	5.988"	1.909"	1.138"	1/2"	1130	UL/FM
FX19PS0350	3-1/2"	6.413"	1.925"	1.15"	1/2"	1130	/
FX19EG0350	3-1/2"	6.413"	1.925"	1.15"	1/2"	1130	UL/FM
FX19PS0400	4"	7.638"	2.421"	1.484"	5/8"	1430	/
FX19EG0400	4"	7.638"	2.421"	1.484"	5/8"	1430	UL/FM
FX19PS0500	5"	9.339"	2.941"	1.709"	5/8"	1430	/
FX19EG0500	5"	9.339"	2.941"	1.709"	5/8"	1430	UL/FM
FX19PS0600	6"	11.272"	3.562"	2.413"	3/4"	1940	/
FX19EG0600	6"	11.272"	3.562"	2.413"	3/4"	1940	UL/FM
FX19PS0800	8"	13.780"	4.331"	2.504"	3/4"	2000	/
FX19EG0800	8"	13.780"	4.331"	2.504"	3/4"	2000	UL



Standard Clevis Hanger

SIZE

Material: Carbon Steel

Unit: Inch

FirmFX #	PIPE SIZE	A	B	C	RS	Static load (lbs)	Certification
FX19PS1000	10"	16.327"	4.142"	9.4695"	7/8"	3600	/
FX19EG1000	10"	16.327"	4.142"	9.4695"	7/8"	3600	/
FX19PS1200	12"	18.504"	4.173"	10.485"	7/8"	3800	/
FX19EG1200	12"	18.504"	4.173"	10.485"	7/8"	3800	/
FX19PS1400	14"	21.311"	5.602"	12.854"	1"	4200	/
FX19EG1400	14"	21.311"	5.602"	12.854"	1"	4200	/
FX19PS1600	16"	23.398"	5.642"	13.594"	1"	4600	/
FX19EG1600	16"	23.398"	5.642"	13.594"	1"	4600	/
FX19PS1800	18"	26.35"	6.272"	15.39"	1-1/8"	4800	/
FX19EG1800	18"	26.35"	6.272"	15.39"	1-1/8"	4800	/
FX19PS2000	20"	29.232"	6.693"	16.897"	1-1/4"	4800	/
FX19EG2000	20"	29.232"	6.693"	16.897"	1-1/4"	4800	/
FX19PS2400	24"	33.248"	6.693"	18.826"	1-1/4"	4800	/
FX19EG2400	24"	33.248"	6.693"	18.826"	1-1/4"	4800	/