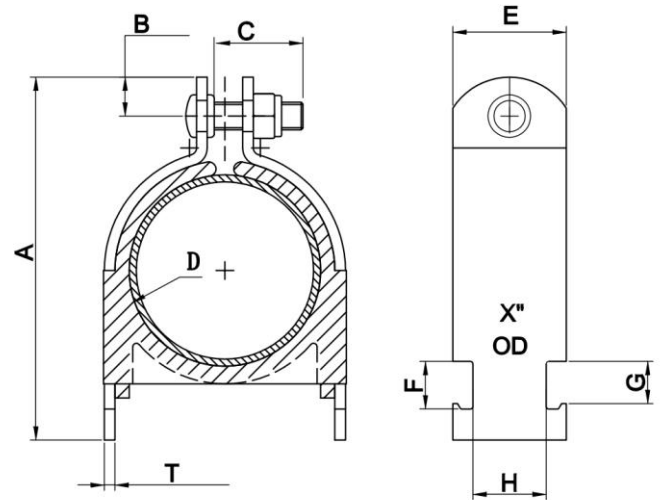


## FEATURES

- **Size Range:** 1/4" to 2-5/8" OD sizes
- **Material:** Carbon Steel, High Strength TPE
- **Finish:** Yellow Zinc Plated
- **Function:**
  - Fits into open side of strut channel.
  - Plastic cushion is hinged to spread apart for easy installation.
  - Reduces noise and absorbs shock by gripping the pipe/tube firmly.
  - Square neck of carriage bolt prevents over-tightening.
  - Nylon locknut prevents loosening under vibration.
- **Service Temperature:** -65°F to 275° F



## SPECIFICATIONS

Material: Carbon Steel

Unit: Inch

FirmFX #	OD Size	A	B	C	D	E Width	F	G	H	T
FX30YZ0025	1/4"	1.96"	0.37"	0.71"	0.24"	1.26"	0.53"	0.47"	0.79"	0.08"
FX30YZ0037	3/8"	1.95"	0.37"	0.71"	0.35"	1.26"	0.53"	0.47"	0.79"	0.08"
FX30YZ0050	1/2"	2.09"	0.37"	0.71"	0.47"	1.26"	0.53"	0.47"	0.79"	0.08"
FX30YZ0062	5/8"	2.21"	0.37"	0.71"	0.59"	1.26"	0.53"	0.47"	0.79"	0.08"
FX30YZ0075	3/4"	2.40"	0.37"	0.71"	0.75"	1.26"	0.53"	0.47"	0.79"	0.08"
FX30YZ0087	7/8"	2.53"	0.37"	0.71"	0.87"	1.26"	0.53"	0.47"	0.79"	0.08"
FX30YZ0112	1-1/8"	2.91"	0.43"	0.98"	1.10"	1.26"	0.53"	0.47"	0.79"	0.10"
FX30YZ0137	1-3/8"	3.24"	0.43"	0.98"	1.34"	1.26"	0.53"	0.47"	0.79"	0.12"
FX30YZ0162	1-5/8"	3.64"	0.43"	0.98"	1.61"	1.26"	0.53"	0.47"	0.79"	0.12"
FX30YZ0212	2-1/8"	4.23"	0.43"	0.98"	2.13"	1.26"	0.53"	0.47"	0.79"	0.12"
FX30YZ0262	2-5/8"	4.91"	0.43"	0.98"	2.60"	1.26"	0.53"	0.47"	0.79"	0.12"